



Buxton Road, Disley

 JARDINE
ESTATES



Buxton Road

Disley, Stockport

Welcome to this Victorian four-bedroom, two-bathroom detached home, where period character meets modern grandeur in a home designed for both family living and entertaining.

From the moment you enter the rustic cobblestone gated driveway, you're greeted by a serene sense of privacy, framed by mature trees, lush greenery, and well-maintained hedges. The house sits with a gravitas befitting of a property of this age. Greatly beloved by the previous owners it is now ready for a new chapter with a new family.

The property's period architecture is beautifully complemented by tasteful touches, with an extension covered with natural wood cladding and elegant internal traditional features evident throughout.





Buxton Road

Disley, Stockport

The inviting entrance hall, with its beautifully carved wooden staircase and ornate banister, sets the tone for the rest of the home, accented by period details.

The generously proportioned main reception room is flooded with natural light and features built-in bookshelves, creating the perfect ambience for unwinding with a book or hosting family and friends.





Buxton Road

Disley, Stockport

The heart of the home is the eclectic 1960's kitchen, oozing style and appreciation for the mid century décor. Thoughtfully fitted with a large gas range cooker and stainless steel hood, extensive wooden cabinetry, and stylish wooden countertops. With space for a dedicated breakfast nook overlooking the garden makes mornings feel warm and welcoming. The utility area provides additional storage and access to the cellar.

For more formal occasions, the elegant dining room, enhanced by large bay windows and period detailing through out the room and traditional black period fireplace, provides a bright and gracious space for memorable gatherings with friends and family, fabulous meals and competitive games nights.

Every room is a celebration of craftsmanship and comfort.







Buxton Road

Disley, Stockport

The seamless flow from the formal dining room takes you through a glass entryway and into the Annex and ensuite bathroom. The double bedroom has French doors opening onto the expansive, landscaped garden inviting you to savour the tranquil garden views and peaceful outdoor living. Upstairs, the three bedrooms offer distinctive retreats for every member of the family.

The Principal bedroom is a serene haven, featuring large bay windows flooding the room with natural light, an en-suite bathroom, and built-in shelving for treasured books or personal décor. The feature black traditional fireplace creates a restful atmosphere.

A further two double bedrooms showcase plenty of space, storage and natural light, with traditional fire places.



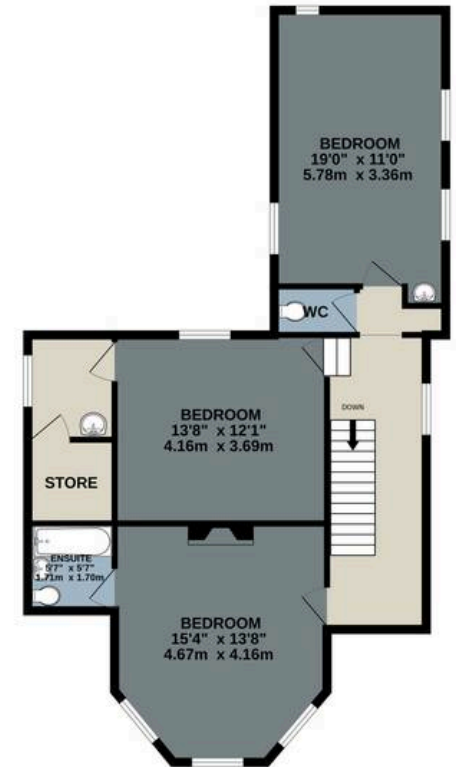
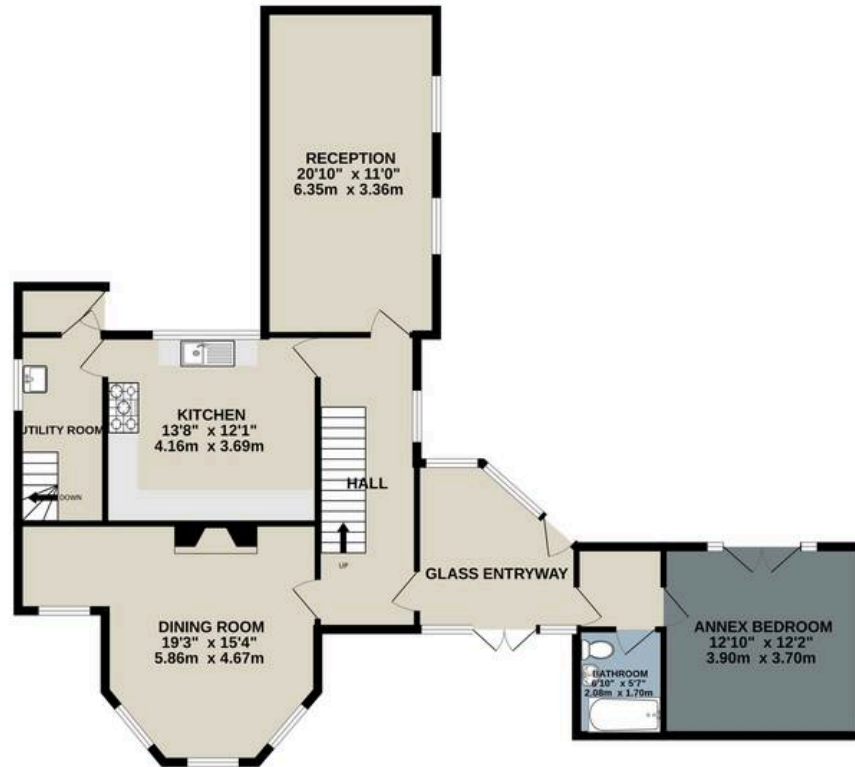
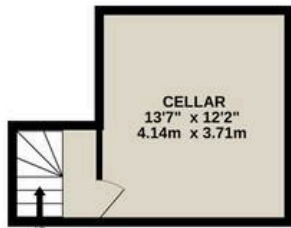
Step outside and discover an oasis of natural beauty. The extensive, landscaped gardens are a true highlight, featuring mature trees, lush lawns and vibrant flower beds



BASEMENT
200 sq.ft. (18.6 sq.m.) approx.

GROUND FLOOR
1130 sq.ft. (104.9 sq.m.) approx.

1ST FLOOR
800 sq.ft. (74.4 sq.m.) approx.



TOTAL FLOOR AREA : 2130 sq.ft. (197.9 sq.m.) approx.

Whilst every attempt has been made to ensure the accuracy of the floorplan contained here, measurements of doors, windows, rooms and any other items are approximate and no responsibility is taken for any error, omission or mis-statement. This plan is for illustrative purposes only and should be used as such by any prospective purchaser. The services, systems and appliances shown have not been tested and no guarantee as to their operability or efficiency can be given.

Made with Metropix ©2026



Buxton Road

Disley, Stockport

Disley is a charming village in Cheshire on the edge of the Peak District but with in easy reach of Stockport and Manchester. Lyme Hall and Lyme Park are stunning historic estates owned by the National Trust and are just a six minute drive away of the property. It offers extensive grounds and beautiful walking trails. Disley has excellent transport links, being just a 15-minute drive from Manchester Airport and approximately 35 minutes by train to Manchester Piccadilly. Disley Train Station is a three minute drive away or a 25 minute walk if you prefer. There are well-connected local bus routes, making commuting and travel straightforward and convenient. Education is well catered for, with numerous reputable public schools in Disley and neighbouring High Lane, alongside easy access to a range of private schools in the surrounding areas. There are excellent bars and restaurants to chose from all with in walking distance .

Council Tax band: G

Tenure: Freehold

- NO CHAIN
- Detached period property in a secluded plot
- Private cobblestone gated driveway
- Extensive mature garden
- Period fireplaces
- Period features throughout
- Multiple outbuildings
- Separate annex bedroom and bathroom
- Cellar
- Lyme Park on your doorstep





Jardine Estates

287 Stockport Road, Gee Cross, Hyde - SK14 5RF

0161 871 7071 • team@jardineestates.co.uk • jardineestates.co.uk



JARDINE
ESTATES